



PAPAMOA  
COLLEGE  
**PROSPECTUS**

2019



# Inspired learning Whakamanawa akoranga







# Exciting futures Whakawana ki mua

At Papamoa College, we believe in giving students the skills to make their own way in the world. Our vision is to develop successful people, who value relationships and community, and are committed to learning for life.

Inspired Learning. Exciting Futures.  
Whakamanawa akoranga. Whakawana ki mua.

Students who attend Papamoa College will be engaged in their learning and develop the necessary skills to prepare them for life now and in the future.

# MODERN LEARNING SCHOOL




## LEARNING OPPORTUNITIES



## FLEXIBLE LEARNING ENVIRONMENT







We look forward to the opportunity to partner with you to create a school where students learn for life.

# KIA ORA WELCOME

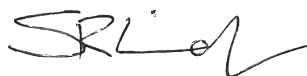
Welcome to Papamoa College.

Student learning is the focus at Papamoa College. Everything we do must contribute to improve student learning. The NZ Curriculum provides us with the scope to develop learners, not only in particular learning areas (English, Mathematics, Science, Social Science, Arts, Physical Education and Health, Technology and Languages), but also in the key competencies (Thinking, Language Symbols and Text, Participating and Contributing, Managing Self and Relating to Others).

Modern learning is not just about learning knowledge, but also how to construct it and apply it to life. Students are provided with rich and varied learning experiences to cater for different learning needs and rates of learning. Students will also be actively involved and take responsibility for their learning.

Papamoa College is an exciting place to learn. We look forward to the opportunity to partner with you to create a school where students learn for life.

Regards,



Steve Lindsey  
Principal

# MODERN LEARNING SCHOOL

Papamoa College opened its doors in 2011, ushering in an exciting new era for education in the region.

Set amongst one of New Zealand's fastest growing areas, Papamoa College is developing modern learners equipped with the tools to shape the future they will live in.

Students who attend Papamoa College have already set the bar extremely high for those that follow. We are proud to have students that represent our college in national sports teams, as well as having a great number of talented artists and performers. It is an exciting time for the school as we embrace and encourage the achievements of our students, who actively shape our unique identity.






One of the great attractions of our school is its wonderful location. Papamoa College is situated on the east coast of New Zealand, in the picturesque Bay of Plenty. Access to Papamoa Beach and the wider region allows for the inclusion of many learning opportunities for students to experience within the community.

The local community plays an integral role in our vision as a school that inspires learning. By partnering with local experts and businesses we are able to offer our students an enriched learning experience, unique to Papamoa College.







A circular image showing various art supplies on a table, including paint bottles, brushes, and a palette, with a pink and purple color overlay.

Papamoa College  
is a school that  
responds to the  
individual learning  
needs of  
each student.

# LEARNING OPPORTUNITIES

A circular image of a smiling female student in a school uniform, sitting at a desk and writing with a red pen.

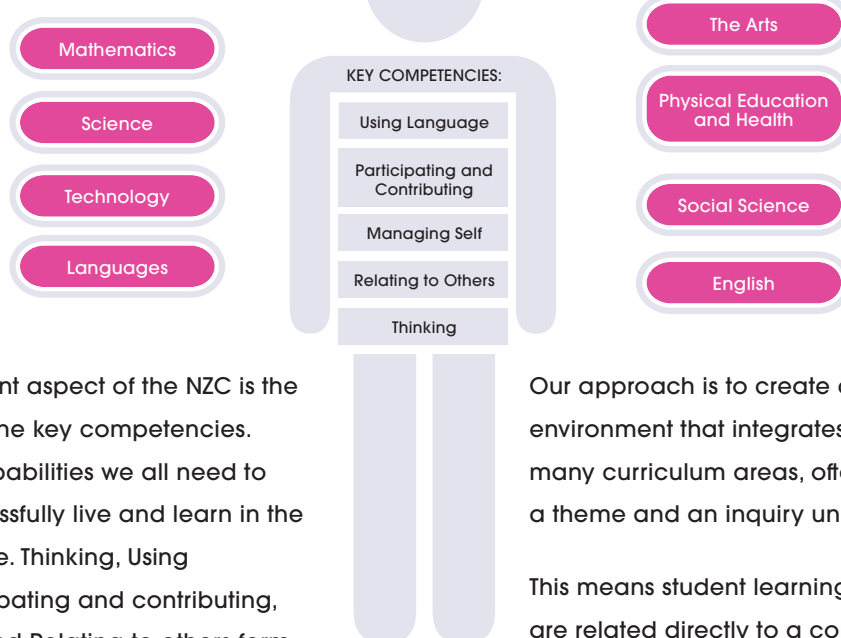
Papamoa College is a Year 7–13, state co-educational school that delivers the New Zealand Curriculum (NZC) in a modern learning environment. The learning programmes and activities we offer are founded on effective learning and teaching practices, supported by educational research.

A circular image showing a pair of hands playing a piano, with sheet music visible on the stand.

Papamoa College is a school that responds to the individual learning needs of each student. Every student is different and therefore requires a differentiated approach. Personalising student learning means having positive relationships with students, understanding their level of achievement and knowing how to progress their learning. This is an ongoing process, which means we are constantly looking at ways to tailor our learning programme to suit individual student needs.



## Integrating the Curriculum



The most important aspect of the NZC is the development of the key competencies. These are the capabilities we all need to develop to successfully live and learn in the present and future. Thinking, Using language, Participating and contributing, Managing self, and Relating to others form the key competencies that will prepare students as life-learners.

Our approach is to create a learning environment that integrates learning across many curriculum areas, often based around a theme and an inquiry unit for each term.

This means student learning activities are related directly to a context that is student centred and at the learning level of individual students.

The core learning areas provide the context for developing the key competencies.

## Learning Through a Process of Inquiry

We all learn better when we are interested in the topic and when it has relevance to our own lives.

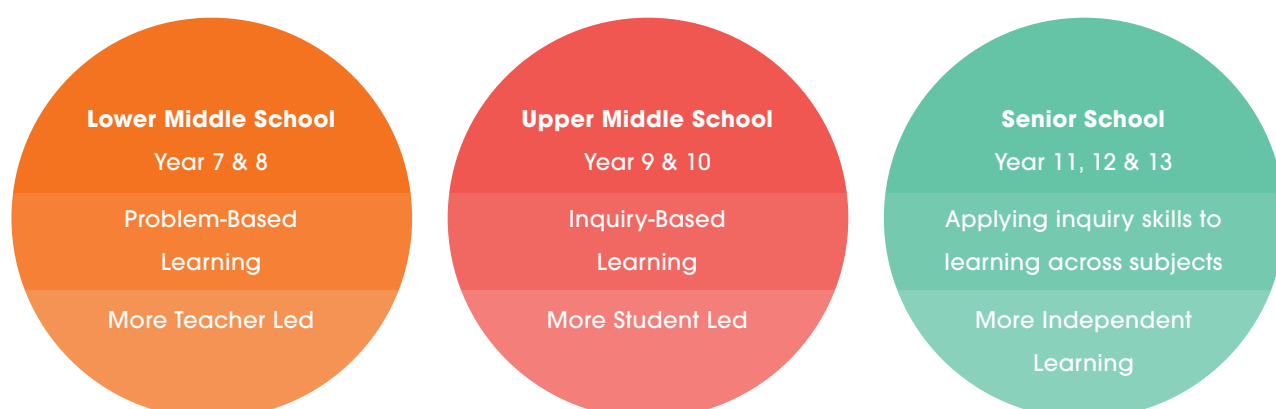
Having a context to explore learning and relate knowledge and skills from all learning areas is important.

Students are exposed to an environment where they are learning through a process of inquiry.

A simple inquiry could be:

What is the question? How will I go about finding out about it? Collecting information, making sense of the information, presenting the findings and making a conclusion, reflecting and reviewing.

Students learn and then apply all aspects of what is needed at each stage of the inquiry process. Learning is actively controlled by the student.





# FLEXIBLE LEARNING ENVIRONMENT

Every area in this state-of-the-art campus is treated as a potential learning space.

Can the environment affect how you learn? We believe the answer to this is yes! For this reason, Papamoa College has been designed to accommodate a variety of students' learning needs.

The campus design includes contemporary and state-of-the-art facilities. Learning largely occurs inside the flexible learning spaces, as well as in the specialist areas, outside in the courtyards and on the fields.



The learning spaces provide flexibility of space, allowing teachers the freedom to be more responsive to changing learning needs. Formal and informal settings, group and individual work, activity and presentation opportunities, are all part of the learning landscape. Students at different year levels are able to learn together, with different teachers at different times.

The Middle School is divided into:

- Lower Middle School: Years 7 and 8
- Upper Middle School: Years 9 and 10

There are four learning commons in the Lower Middle School, and four in the Upper Middle School.

The Senior School comprises Years 11, 12, and 13.



## College Facilities



### GYMNASIUM

- Full-court gymnasium with viewing gallery
- Quality facilities for indoor soccer, basketball, volleyball, netball and more



### GROUNDS

- Large hard court for ball games
- Spacious outdoor field facilities
- Combination of hard and grassed areas



### LIBRARY AND INFORMATION CENTRE

- Access to books, magazines, e-books, audio books, DVDs, computers
- 24-hour access to library catalogue software



### STUDENT SERVICES

- Learning Support Area
- Guidance Counsellor
- Health Centre
- Campus Café



### TECHNOLOGY

- Food Technology room
- Materials Technology rooms
- Media rooms



### PERFORMING ARTS

- Performing Arts Centre
- A theatre, dance studio, and music rooms
- Soundproof recording room



### SCIENCE CENTRE

- Modern laboratories
- Varied workspaces
- Technology rich
- Fully equipped



### ARTS AND MEDIA CENTRE

- Purpose-built learning spaces
- Media suite
- Digital equipment



### FLEXIBLE LEARNING SPACES

- Spaces that adapt for learning needs
- Range of furniture and equipment
- Large spaces, small spaces, tutorial areas and wet areas



# LOWER MIDDLE SCHOOL

## YEAR 7 AND 8

### LEARNING COMMONS

Tatahi

Puke

Maunga

Puna  
wai

An accelerated  
learning programme is  
offered to those  
students who are gifted  
and talented.

Year 7 and 8 students belong to a learning commons.

There are four classes in each learning commons  
(a combination of year 7 and 8 classes). The students  
and staff work and learn as a learning community.

Literacy and Numeracy is considered to be a priority  
for learning and therefore generally occurs at the  
start of the day.

All year 7 and 8 students have specialist classes in:



Physical  
Education  
and Health



Drama



Music



Visual Arts



Technology



Te Reo  
Maori



Languages

Both Lower and Upper  
Middle School students  
have access to a  
wide range of  
co-curricular activities.

AIMS GAMES

LEARNING  
A MUSICAL  
INSTRUMENT

BATTLE OF THE  
COMMONS

ACCELERATE  
PROGRAMME

MATHEMATICS  
COMPETITION



# UPPER MIDDLE SCHOOL

## YEAR 9 AND 10

### LEARNING COMMONS

Moana

Motu

Awa

Wairere

Each learning commons  
has specialist English,  
Mathematics, Social Science,  
and Science teachers.

Year 9 and 10 students belong to a learning commons.

There are four classes in each learning commons; two  
Year 9 classes, and two Year 10 classes.

Year 9 and 10 students are beginning to receive  
specialist learning in preparation for future years.

Year 9 students learn English, Mathematics, Social  
Science, Science, Technology, Drama, Music, Visual Arts,  
Te Reo Maori, Languages, Physical Education and  
Health, Inquiry and Citizenship.

Year 10 students learn English, Mathematics, Social  
Science, Science, Physical Education and Health,  
Inquiry, Citizenship and choose from:

#### Arts

Drama  
Dance  
Music  
Visual Art

#### Technology

Technology Digital  
Technology Food  
Technology Materials  
Technology Textiles  
Graphics/DVC

#### Others

Enterprise  
Languages French  
Languages Te Reo Maori  
Media Studies  
Sports Performance

ICAS  
EXAMINATIONS

SPEECH  
COMPETITIONS

CAMPS

SPORTS  
PROGRAMME  
Range of sporting  
competitions

OUTDOOR  
EDUCATION

Tramping,  
whitewater rafting,  
kayaking, ice climbing,  
skiing, mountain biking,  
canyoning

PCT FITNESS  
CHALLENGE

# SENIOR SCHOOL

YEARS 11, 12 AND 13

Learning in the Senior School builds on the foundations established from learning in the Middle School. Students develop into independent and mature learners, who focus on gaining their national qualification certificates at NCEA level 1, level 2 and level 3.

Students not only work hard towards their chosen qualifications but also develop the skills necessary for future life.

## GRADUATE PROFILE

We aim to create student graduates who demonstrate the following:

- Having a sense of self
- Being prepared for life
- Having the highest academic qualifications
- Being knowledgeable
- Living the values of the school
- Being people-focused
- Being a valuable citizen

## PATHWAYS TO THE FUTURE

It is important that students gain the necessary learning that provides them with the best possible chances for future opportunities, whether that is for further tertiary education or employment.





## ACADEMIC MENTORING

The Academic Mentor is the significant teacher who provides daily pastoral support and academic advice. Academic Mentors understand and know their students very well and guide students to be as successful as possible.

The Senior School Director, Senior School Staff Leaders and Academic Mentors oversee the academic and pastoral needs of senior students.



## CAREERS ADVICE

Expert careers staff provide advice and guidance for students, for future careers and vocations.

Students are exposed to a range of learning opportunities working with employers and other training providers, including; Gateway, STAR courses and Trades Academies.

## SENIOR SCHOOL LEARNING PROGRAMME

Level 1	Level 2	Level 3
Art and Design	Applied Mathematics	Biology
Citizenship	Biology	Business/Accounting
Commerce	Business/Accounting	Chemistry
Dance	Chemistry	Citizenship
Drama	Citizenship	Dance
English	Dance	Drama
French	Drama	DVC
Graphics/DVC	DVC	English
Health	English	French
Maori	French	Future Directions
Mathematics	Future Directions	Geography
Media	Geography	Health
Music	History	History
Photo Design	Health	Mathematics Calculus
Physical Activity	Maori	Mathematics Statistics
Science	Mathematics Calculus	Maori
Social Sciences	Mathematics Statistics	Media
Physical Education	Media	Music
Technology Digital	Music	Outdoor Education
Technology Food	Outdoor Education	Photo Design
Technology Materials	Photo Design	Physical Education
Technology Textiles	Physical Education	Physics
	Physics	Science
	Science	Technology Digital
	Technology Digital	Technology Food
	Technology Food	Technology Materials
	Technology Materials	Technology Textiles
	Technology Textiles	Tourism
	Tourism	Visual Art Design
	Visual Art Design	Visual Art Painting
	Visual Art Painting	

Actual courses that run are dependent on student numbers and staff availability. ● = Optional ● = Compulsory



# STUDENT LIFE

At Papamoa College, we value the development of life skills as an integral part of a well-rounded education.

Being a student at Papamoa College is about more than just acquiring knowledge. It is about having the opportunity to grow as individuals who understand the importance of learning for life. There are many aspects to school life at Papamoa College that aim to develop and encourage our students to become successful and valued members of their community.



## MIDDLE SCHOOL

Every student belongs to a **learning class**, a **learning commons**, and a **whanau group**.

## SENIOR SCHOOL

Every senior student belongs to a **pathway class** and **whanau group**.





## SPORTS

Our students enjoy a variety of co-curricular activities, including a range of sports. Schoolwide athletics, cross-country and swimming are important events throughout the year. Parent and community support is a vital part of the sports programme.

## BEHAVIOUR

It is expected that all students will treat everyone with respect, and show positive and encouraging behaviour to each other. Respect for yourself, others, our school environment and the community is what guides our behaviour.

## CULTURE

The choir, dance club, music groups, art club and kapa haka group all add to creating a rich, diverse and busy place to be involved.

## STUDENT LEADERSHIP

Students have the opportunity to develop and demonstrate their leadership skills.

### Middle School Council (Year 7-10)

Middle School Student Leaders

### Senior School Council (Year 11-13)

Senior School Student Leaders

Head Boy and Head Girl,

Deputy Head Boy and

Deputy Head Girl

### Whanau Student Leaders

for the four whanau groups

## DEANS AND SENIOR LEADERS

In the Middle School, there are Year 7 and 8 Deans and also Year 9 and 10 Deans.

Each level of the Senior School has a Senior School Staff Leader who ensures the smooth running and organisation of all aspects related to the respective year.

## PASTORAL CARE

The Guidance Counselling team is integral to our pastoral care programme, providing important emotional support for both students and staff. In addition, there is a school-based health clinic. This clinic provides student health care and advice from a nurse during school time, as well as a doctor being available once a week. There is also a physiotherapist available once a week.

## LEARNING SUPPORT

The Learning Support area of the school collaborates with all teaching staff to provide meaningful learning opportunities for students who, for any reason, have difficulties with their learning. This may include students for whom English is a second language, students with physical or cognitive difficulties or students who are having social or emotional problems.

## CITIZENSHIP PROGRAMME

One block in every timetable cycle is dedicated to our Citizenship programme. During this time students will focus on what it is to be a citizen in society, and on ways to become involved and contribute to our community. This programme provides opportunities to form strong links with community groups and become actively involved in making our community a better place.

Each whanau group represents different values and is associated with a colour:



## STUDENT WHANAU SYSTEM

The goals of the whanau system are to create school unity and a healthy environment of competition. All students are allocated to one of four whanau groups who they meet with once every timetable cycle, as well as taking part in whanau competitions throughout the year.

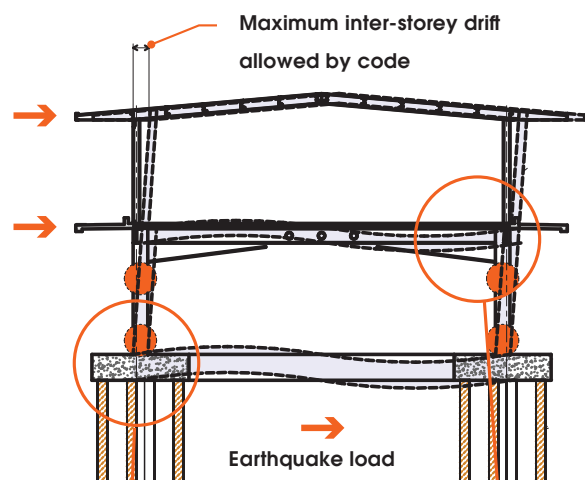
# ENVIRONMENTALLY CONSCIOUS

Part of being a good citizen is about caring for our environment.

Being an environmentally conscious school is intrinsic to the values of Papamoa College and is another way we foster positive habits in our students.

## BUILT TO RESIST EARTHQUAKES

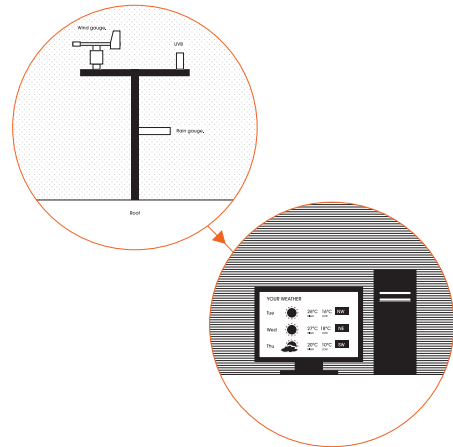
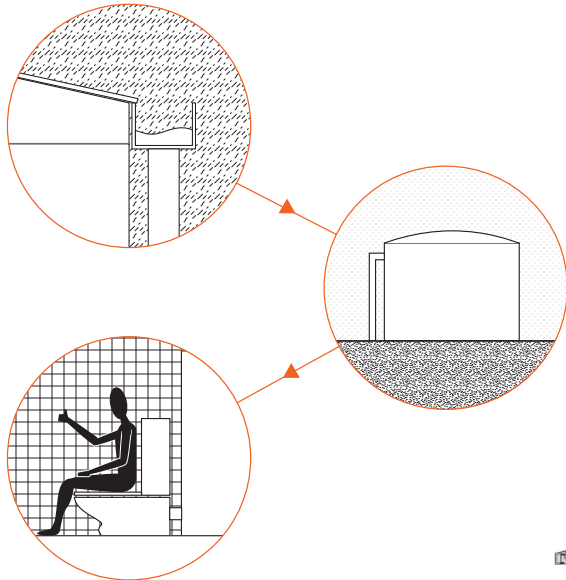
Our building has been designed with added emphasis on student safety during natural disasters. Having a rock solid foundation at the base is vital. Movement and load tension is considered in the design so that the energy of an earthquake is spread across the building and no single component is subjected to destructive force.





## WEATHER STATION

The school has a weather station, which consists of a rainfall sensor, an ultraviolet light sensor and a wind speed and direction instrument. Information from the weather station is available online for the students to access and monitor changes in weather patterns.

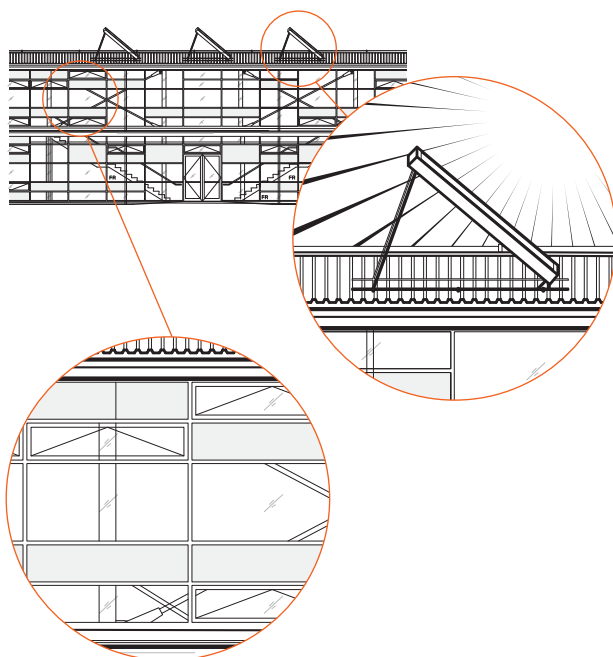
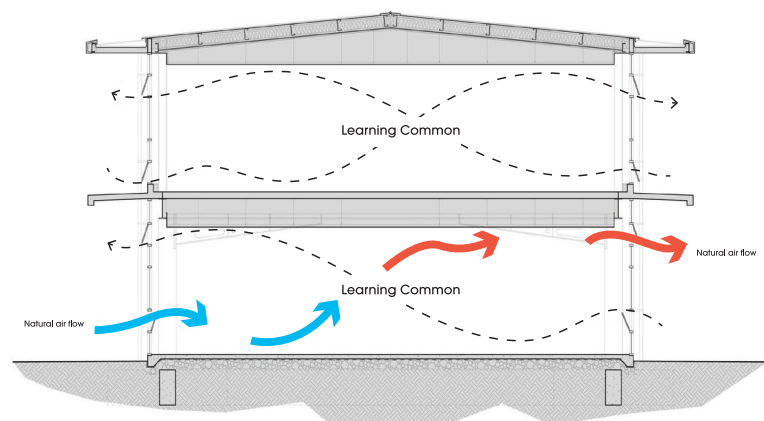


## RAINWATER HARVESTING

Papamoa College uses a sophisticated guttering system to collect rainwater that is then used to flush toilets. It is estimated to reduce town supply water usage by 889,000 litres per year – enough to supply 30 households!

## NATURAL VENTILATION

The school building is designed to utilise natural airflow from outside. We cool the inside using natural airflow.



## SOLAR PANELS

Papamoa College uses solar energy to heat its water. It is a wonderful non-polluting energy source – and it's free!

There are 15 solar panels sitting on the roof of the building that transfer energy to a water cylinder. By using this method we are able to provide up to 75% of the school's hot water needs during summer – and up to 45% during the winter months.

## NATURAL LIGHTING

We have a large number of windows to let in natural light and the sun's warmth.

Papamoa College operates an enrolment scheme. Students are eligible to attend the school if they live within the designated home zone.

Enrolments need to be made on the official enrolment form. These are available from the Papamoa College reception, online through our website and local contributing schools.

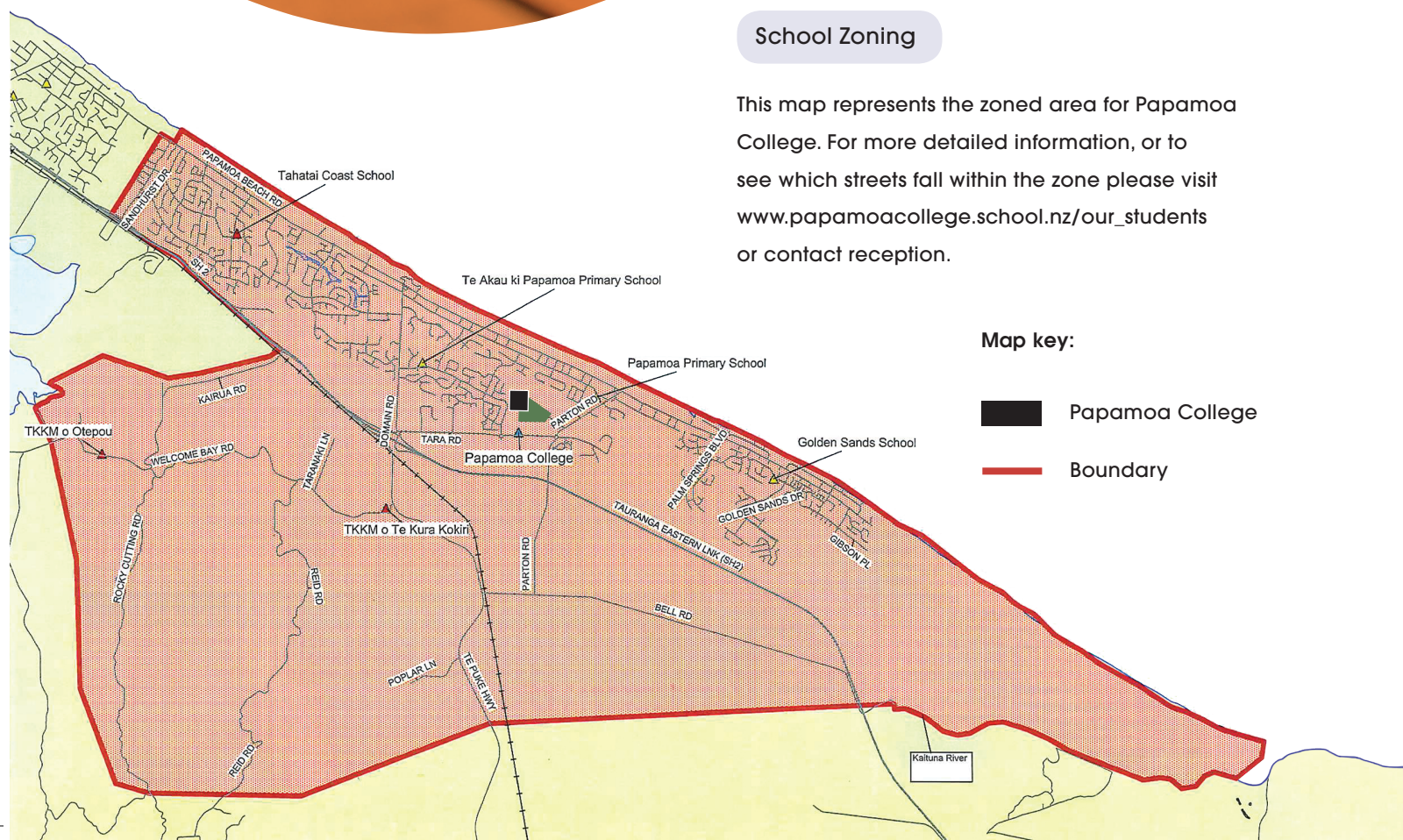
Please enrol as soon as possible to assist us with placing your child in the class that best suits their learning requirements/needs.

# ENROLMENT INFORMATION

**A limited number  
of out of zone  
enrolments** may be  
accepted for 2019.  
Contact reception for  
further information.

## School Zoning

This map represents the zoned area for Papamoa College. For more detailed information, or to see which streets fall within the zone please visit [www.papamoacollege.school.nz/our\\_students](http://www.papamoacollege.school.nz/our_students) or contact reception.







## Uniforms

The school uniform provides a range of apparel for a variety of tastes. This is available for purchase through the uniform shop or can be purchased online at [www.uniformgroup.co.nz](http://www.uniformgroup.co.nz)

### MIDDLE SCHOOL UNIFORM YEAR 7 - 10

Blue Shirt,  
Jersey or Cardigan,  
Skirt or Shorts, School Socks,  
PE Shirt, PE Shorts

### SENIOR SCHOOL UNIFORM YEAR 11 - 13

White Shirt,  
Jersey or Cardigan,  
Skirt, Shorts or Trousers,  
School Socks,  
PE Shirt, PE Shorts

The uniform rules and regulations are published online at [www.papamoacollege.school.nz/gp\\_uniforms](http://www.papamoacollege.school.nz/gp_uniforms) and in the student handbook. A copy can also be obtained from reception.

#### Footwear:

- **Sandals:** Plain black sandals. Must have a heel strap and strap over the top of the ankle. Sandals are not a jandal or a slip on. The sandals should not contain significant branding or writing. Sandals must be worn as they were designed. The heel strap must be worn around the heel.
- **Shoes:** Plain black imitation or leather polishable shoes, that are closed in, and either lace up or slip on. No canvas (or similar) shoes. Shoes should not be a sports shoe or boot. Shoes should not contain significant branding or writing. While it is important that footwear is comfortable and supports the feet, it is intended that footwear is a school shoe and not an item of fashion. Shoes must be worn as they were designed. If in doubt, please ask before you purchase footwear.

#### OPTIONAL UNIFORM ITEMS

- **Hat Cap:** The cap must be worn with the peak facing the front.
- **Hat Wide Brim:** Hats must be removed when indoors as a courtesy to others.
- **Beanie:** The beanie must be removed when indoors as a courtesy to others.
- **Jacket**
- **Scarf**
- **Formal Blazer** - Senior School item.
- **Tie** - Senior School item.

*Check the specific uniform regulations before buying!*







"WHAT I LIKE ABOUT PAPAMOA COLLEGE IS EVERYONE IS SO FRIENDLY AND THE SCHOOL IS SO COLOURFUL. THE TEACHERS ARE SO GREAT AT THEIR JOBS." - MELANIE.

"I LOVE THE RANGE OF SPECIALIST SUBJECTS THAT WE GET. ALL OF THE TEACHERS ARE REALLY NICE" - JESSIE.

"I LIKE THAT AT PAPAMOA COLLEGE WE HAVE THE CHOICES TO MAKE SURE WE ARE GOING FORWARD WITH WHAT WE WANT TO DO FOR OUR FUTURE. WE ARE ENCOURAGED TO FOLLOW OUR DREAMS AND GUIDED ON HOW TO GET THERE " - ELEANOR.

"I REALLY LIKE THE WAY WE DO OUR LEARNING THROUGH INQUIRY. I REALLY LIKE THE OPEN PLAN COMMONS AND BEING ABLE TO TALK TO ANY OF THE TEACHERS ABOUT MY LEARNING." - GEORGIA.

"TEACHERS ARE ALWAYS WILLING TO HELP AND GIVE UP FREE TIME TO ENSURE WE UNDERSTAND N.C.E.A STANDARDS" - KRYSTAL.

"THE OPEN LEARNING ENVIRONMENT PROVIDES STUDENTS WITH THE OPPORTUNITY TO WORK COLLABORATIVELY AND MAXIMISE LEARNING. TEACHERS AT PAPAMOA COLLEGE ARE ALWAYS FRIENDLY AND EAGER TO ASSIST STUDENTS IN ALL AREAS OF LEARNING" - MANDI AND ANNALIESE.

"IT'S A FRIENDLY ENVIRONMENT AND EVERYONE TREATS EACH OTHER AS EQUALS." - KATHERINE.





# PAPAMOA COLLEGE

151 Doncaster Drive  
PO Box 11 150  
Papamoa 3151  
T. 07 542 0676  
F. 07 542 9069

Inspired Learning **Exciting Futures**

Whakamanawa akoranga Whakawana ki mua

[www.papamoacollege.school.nz](http://www.papamoacollege.school.nz)